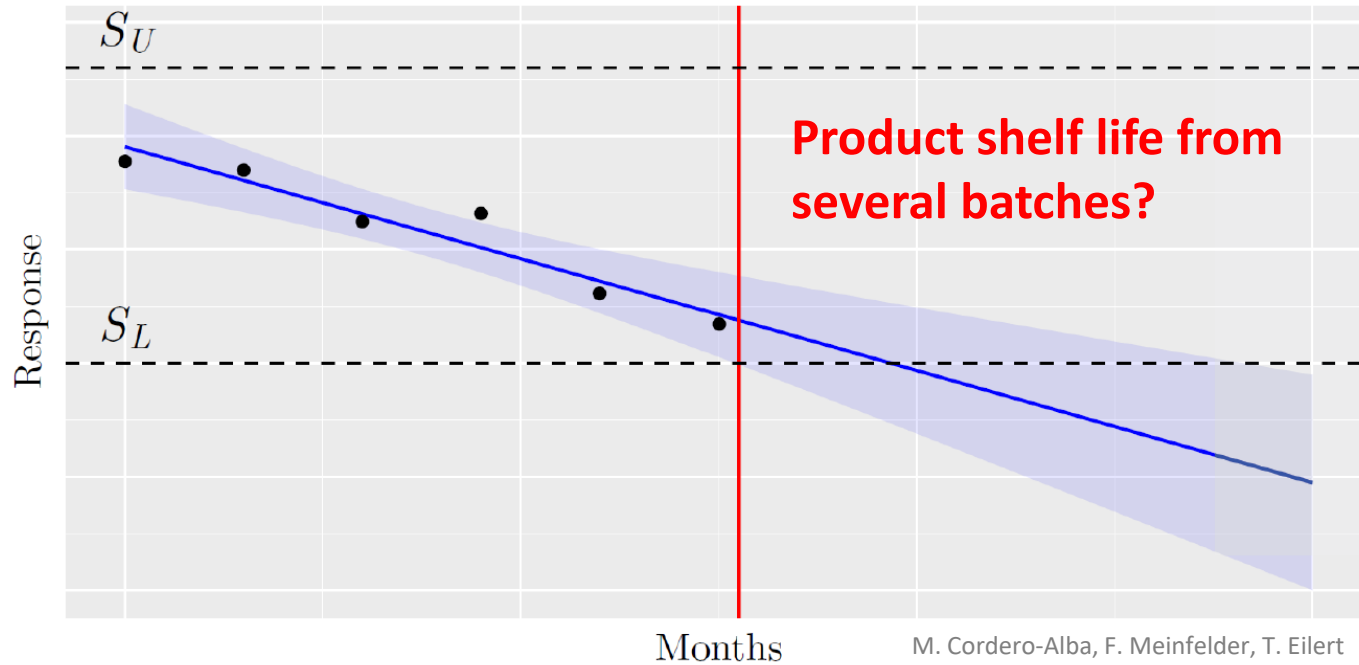
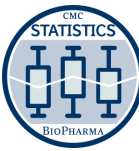


A Modern Approach to Stability Studies via Bayesian Linear Mixed Models Incorporating Auxiliary Effects

Tobias Eilert 26.10.2023

Task in a Stability Study: ICH Q1E



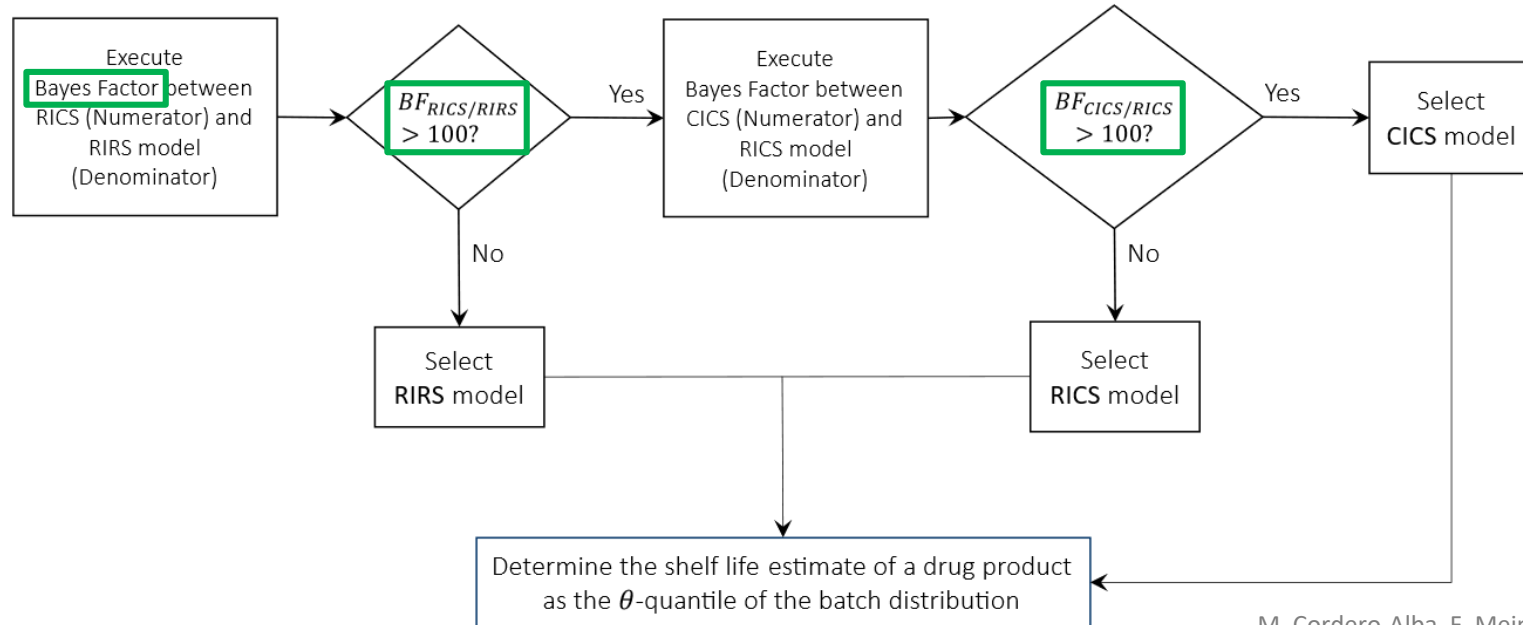
Representing the ICH Q1E by a Bayesian

LMM

Random Intercept &
Random Slope
(RIRS)

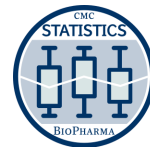
Random Intercept &
Common Slope
(RICS)

Common Intercept
& Common Slope
(CICS)



M. Cordero-Alba, F. Meinfelder, T. Eilert

Case Study II: Results

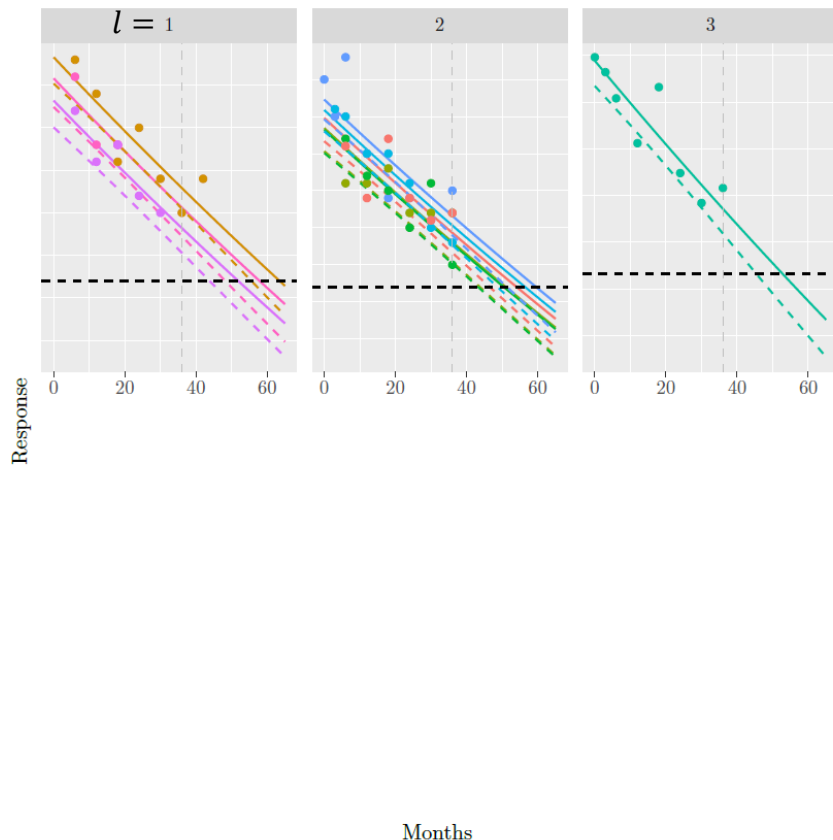


$$B_{tl} = C_l + \alpha_{jl} + \beta_0 t$$

$$\alpha_{jl} \sim \mathcal{N}(0, \sigma_\alpha)$$

ICH Q1E

Bayesian LMM

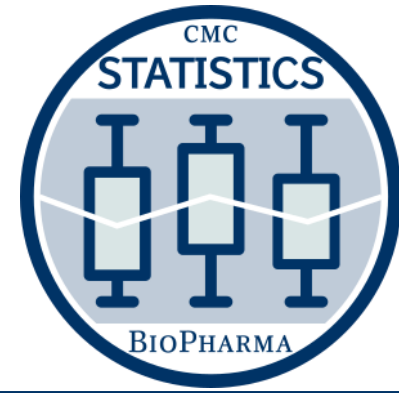


Batch Shelf Lives:

Batch	Concentration	\hat{t}_S^{ICH}
1	1	48.00
2	1	43.50
3	1	55.50
4	2	51.00
5	2	43.50
6	2	48.50
7	2	43.00
8	2	46.50
9	3	45.00

Product Shelf Lives:

Concentration	$\hat{t}_{S,l}^{ICH}$
1	43.50
2	43.00
3	45.00



Thank you for your Attention!

Do you have any Questions, Comments or
Remarks?

